



OPTIONS

Seat and backrest

- soft wood
- hardwood of European origin
- hard wood (oil finish)
- premium hard wood
- HPL

Methods of installation

- attached by bolts to foundation

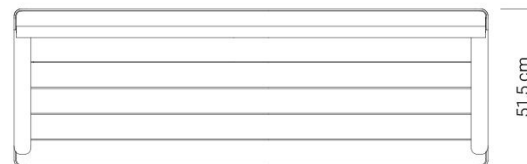
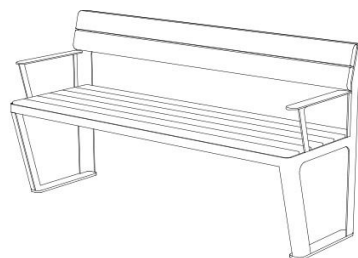
DESCRIPTION

Scandik bench 02.046.1 is a modern urban bench in the style referring to Scandinavian city architecture.

Minimalism, simplicity of shapes, and attention to the smallest detail make the bench is modern and pleasant to receive. It will perfectly fit into modern space. We recommend it especially for outdoor projects such as parks, streets and squares. Scandik bench 02.046.1 is a version with backrests and armrests, which can be a great convenience for seniors. There are bench versions with and without backrests.

The bench frame is made of steel. You can choose between stainless steel and carbon steel, galvanized and powder coated in any RAL colour. The finishing of the bench, the seat and backrest are made of wood, or optionally HPL laminate or steel. Wood elements are made in domestic or exotic wood. The whole bench is screwed to the ground with dowels.





GENERAL TECHNICAL DATA

Weight

- 60 kg

Dimensions

- width: 154 cm
 - depth: 52 cm
 - seat height: 44 cm
 - height with backrest: 81 cm

Materials

- steel: carbon or stainless
 - Domestic coniferous or exotic wood (iroko, sapeli, meranti, tauari)
 - HPL

ZANO



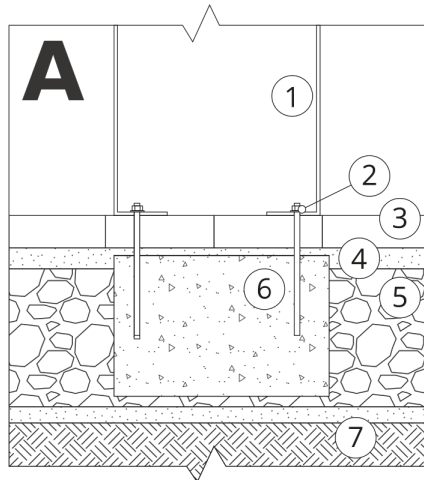
Iwona Żaczek

Product: Scandik Bench
 Catalog number: **02.046.1**
 Designer: Iwona Żaczek

In accordance with the Polish Law on Copyright and Related Rights of 04.02.1994 (Official Journal of Laws No. 24, item 83, corrected: Journal of Laws No. 43, item 170) and in accordance with the EU copyright legislation including all EU directives and regulations on copyright, Zano Mirosław Zarotynski Company, reserves the copyright of drawings, descriptions, 3D models, renderings, graphics, content contained in offers, attachments to offers and all other documents. Its content is the intellectual property of ZANO Mirosław Zarotynski company. The use of author's ideas, solutions, copying, distribution of photos, graphics or fragments of graphics, descriptive texts, for profit, without the permission of the author - ZANO Mirosław Zarotynski company - is prohibited and constitutes a copyright infringement and is punishable.

NOTE: The drawings do not reflect the actual dimensions of the foundation. They are only exemplary assembly schemes taking into account the type of anchoring and the substrate material to which the furniture is to be fixed.

The size of the foundation depends on the local foundation conditions.



INSTALLATION INTO PAVING WITH FOUNDATION

Description of the assembly

1. ZANO product
2. Quick-action fastener or chemical anchor
3. Stone paving / concrete paving / stone slabs / concrete slabs
4. Sand ballast (approx. 2 - 4 cm)
5. Stone aggregate substructure
6. Concrete foundation, class C16/20 (top surface concrete 10 cm below paving surface)
7. Ground



INSTALLATION TO PAVING

Description of the assembly

1. ZANO product
2. Quick-action fastener or chemical anchor
3. Stone paving / concrete paving / stone slabs / concrete slabs
4. Sand ballast (approx. 2 - 4 cm)
5. Stone aggregate substructure
6. Ground



CONCRETE / ASPHALT MOUNTING

Description of the assembly

1. ZANO product
2. Quick-action fastener or chemical anchor
3. Fixed hardened surface e.g. concrete or asphalt
4. Concrete foundation, class C16/20 (top surface concrete 10 cm below paving surface)
5. Stone aggregate substructure
6. Sand ballast (approx. 2 - 4 cm)
7. Ground



MOUNTING TO CONCRETE FOUNDATION

Description of the assembly

1. ZANO product
2. Quick-action fastener or chemical anchor
3. Concrete foundation, class C16/20 (top surface concrete 10 cm below paving surface)
4. Ground