



OPTIONS

Seat

- soft wood
- hardwood of European origin
- hard wood (oil finish)
- premium hard wood
- carbon steel (s235Jr)
- stainless steel (Aisi 304)
- HPL

Methods of installation

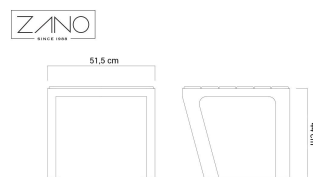
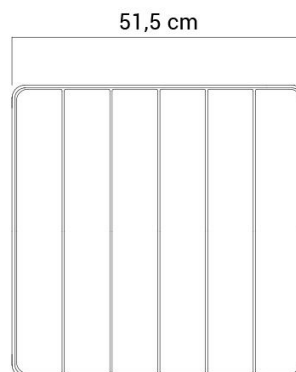
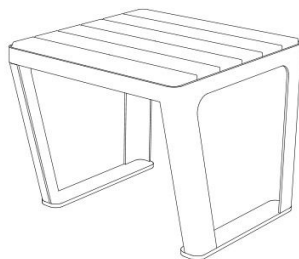
- attached by bolts to foundation

DESCRIPTION

The **Scandik** line has been designed with a view to the modular arrangement of its elements: benches, flowerpots, seats, litter bins and solar station.

The Scandik 02.146 seat is the basic furniture of this line. It can be combined with almost every other piece of furniture. It is equal to 1/3 of the length of each Scandik bench. The seat was mainly designed for the solar station as a bench to complement the seated work table. The table at the station is so wide that we can place a seat 02.146 next to it, and at the same time it will fit next to a person in a wheelchair.

The seat structure is **made of steel**. We can choose between stainless steel and carbon steel, which we galvanize and paint in the RAL colour indicated by the customer. The top of the seat is made of wood. On customer's request, we can make a furniture from any type of domestic or exotic wood. Optionally, the wood in the Scandik line can be replaced by HPL or the whole furniture can be made of steel, similarly to structures.



GENERAL TECHNICAL DATA

Dimensions

- width: 52 cm
- height: 44 cm
- depth: 52 cm

Materials

- steel: carbon or stainless
- Domestic coniferous or exotic wood (iroko, sapeli, meranti, tauari)
- HPL

ZANO



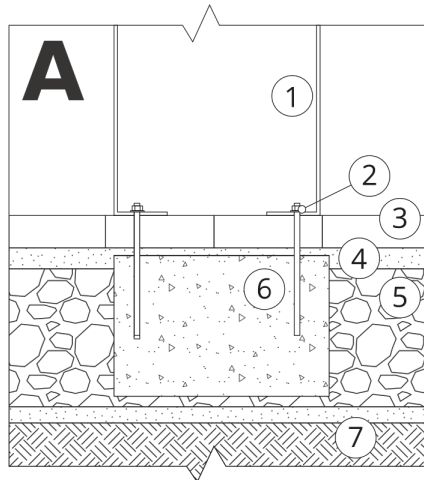
Iwona Żaczek

Product: Scandik Seat
Catalog number: 02.146
Designer: Iwona Żaczek

In accordance with the Polish Law on Copyright and Related Rights of 04.02.1994 (Official Journal of Laws No. 24, item 83, corrected: Journal of Laws No. 43, item 170) and in accordance with the EU copyright legislation including all EU directives and regulations on copyright, Zano Mirosław Zarotynski Company, reserves the copyright of drawings, descriptions, 3D models, renderings, graphics, content contained in offers, attachments to offers and all other documents. Its content is the intellectual property of ZANO Mirosław Zarotynski company. The use of author's ideas, solutions, copying, distribution of photos, graphics or fragments of graphics, descriptive texts, for profit, without the permission of the author - ZANO Mirosław Zarotynski company - is prohibited and constitutes a copyright infringement and is punishable.

NOTE: The drawings do not reflect the actual dimensions of the foundation. They are only exemplary assembly schemes taking into account the type of anchoring and the substrate material to which the furniture is to be fixed.

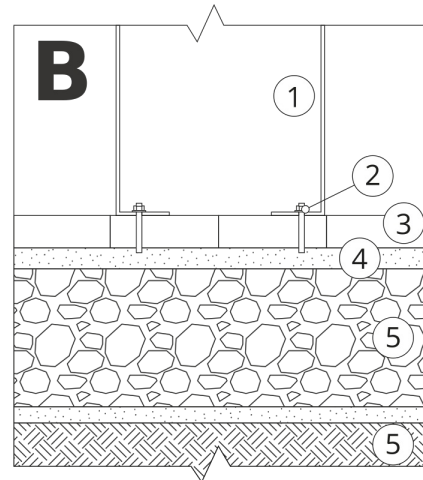
The size of the foundation depends on the local foundation conditions.



INSTALLATION INTO PAVING WITH FOUNDATION

Description of the assembly

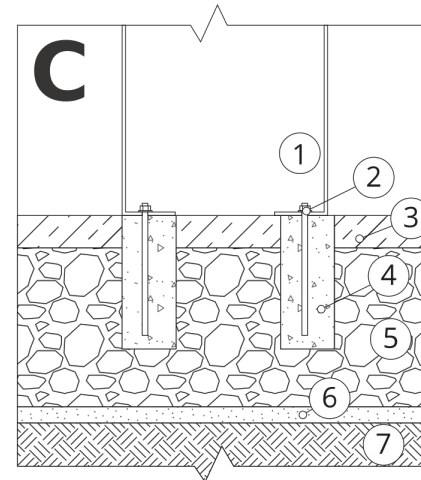
1. ZANO product
2. Quick-action fastener or chemical anchor
3. Stone paving / concrete paving / stone slabs / concrete slabs
4. Sand ballast (approx. 2 - 4 cm)
5. Stone aggregate substructure
6. Concrete foundation, class C16/20 (top surface concrete 10 cm below paving surface)
7. Ground



INSTALLATION TO PAVING

Description of the assembly

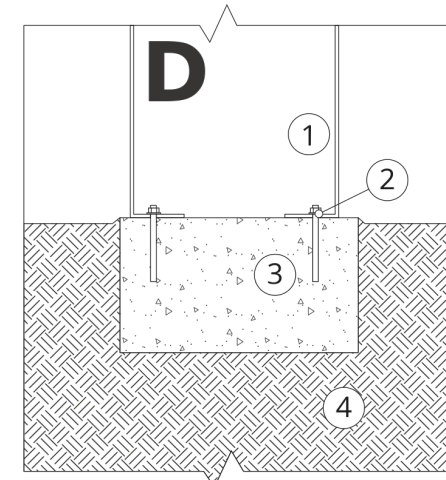
1. ZANO product
2. Quick-action fastener or chemical anchor
3. Stone paving / concrete paving / stone slabs / concrete slabs
4. Sand ballast (approx. 2 - 4 cm)
5. Stone aggregate substructure
6. Ground



CONCRETE / ASPHALT MOUNTING

Description of the assembly

1. ZANO product
2. Quick-action fastener or chemical anchor
3. Fixed hardened surface e.g. concrete or asphalt
4. Concrete foundation, class C16/20 (top surface concrete 10 cm below paving surface)
5. Stone aggregate substructure
6. Sand ballast (approx. 2 - 4 cm)
7. Ground



MOUNTING TO CONCRETE FOUNDATION

Description of the assembly

1. ZANO product
2. Quick-action fastener or chemical anchor
3. Concrete foundation, class C16/20 (top surface concrete 10 cm below paving surface)
4. Ground