



## OPTIONS

### Seat

- soft wood
- hardwood of European origin
- hard wood (oil finish)
- premium hard wood

### Methods of installation

- attached by bolts to foundation

### Additional table

- none
- left side
- right side
- both sides

### Armrests

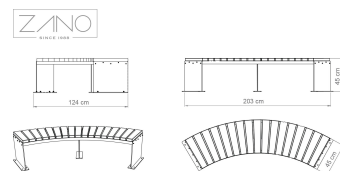
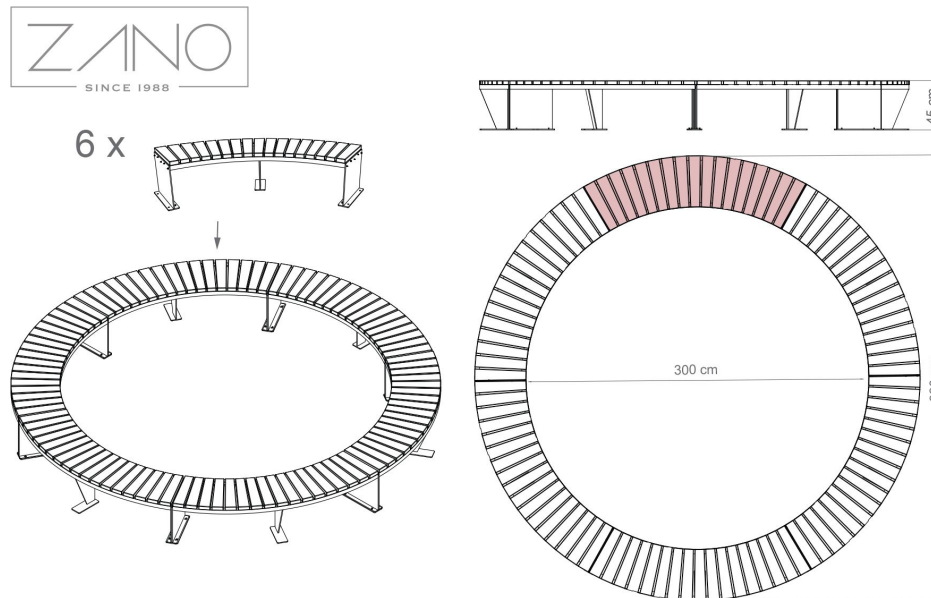
- none
- carbon steel
- stainless steel

## DESCRIPTION

Domino 60° is a great space saver for your outdoor furniture collection. It will be just perfect for every cities and green surroundings. This model offers a timeless design that can provide comfort and style to any traditional landscape, such as: parks, gardens, historical main squares and modern spaces. The seat section is made from wood (pine, spruce or exotic wood). Construction of the Domino bench is made from stainless steel- durable, hygienic and safe material with low maintenance cost. You can also choose carbon steel for the main construction, which is available in all RAL palette standard colours. This model creates a great modular street furniture with other Domino benches - 90° and classic 02.440. You can have a bench of every shape, size and...







## GENERAL TECHNICAL DATA

### Dimensions

- width: 203 cm
- height: 45 cm
- depth: 124 cm
- Bench bending angle: 60°

### Weight

- soft wood: 58 kg
- hardwood of European origin: 69 kg

### Materials

- wood: European coniferous or exotic
- stainless steel or carbon steel

ZANO



*Justyna Derewiaka*

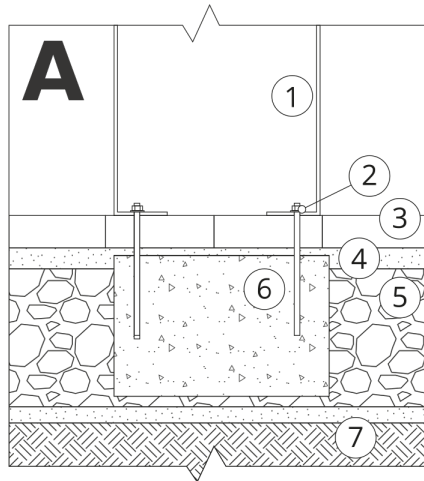
Product: Domino seating 60  
Catalog number: **02.440.2**  
Designer:  
Justyna Derewiaka

In accordance with the Polish Law on Copyright and Related Rights of 04.02.1994 (Official Journal of Laws No. 24, item 83, corrected: Journal of Laws No. 43, item 170) and in accordance with the EU copyright legislation including all EU directives and regulations on copyright, Zano Mirosław Zarotynski Company, reserves the copyright of drawings, descriptions, 3D models, renderings, graphics, content contained in offers, attachments to offers and all other documents. Its content is the intellectual property of ZANO Mirosław Zarotynski company. The use of author's ideas, solutions, copying, distribution of photos, graphics or fragments of graphics, descriptive texts, for profit, without the permission of the author - ZANO Mirosław Zarotynski company - is prohibited and constitutes a copyright infringement and is punishable.



**NOTE:** The drawings do not reflect the actual dimensions of the foundation. They are only exemplary assembly schemes taking into account the type of anchoring and the substrate material to which the furniture is to be fixed.

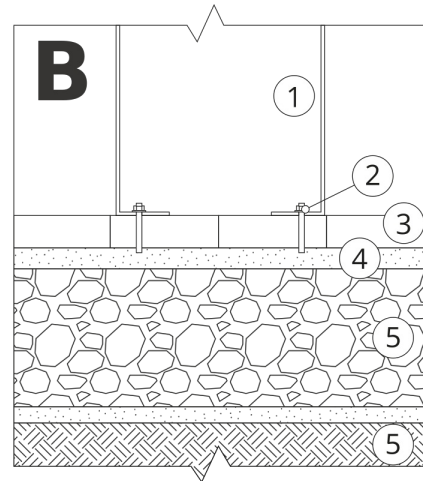
The size of the foundation depends on the local foundation conditions.



### INSTALLATION INTO PAVING WITH FOUNDATION

#### Description of the assembly

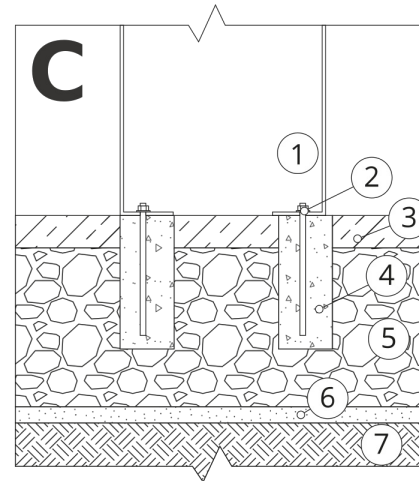
1. ZANO product
2. Quick-action fastener or chemical anchor
3. Stone paving / concrete paving / stone slabs / concrete slabs
4. Sand ballast (approx. 2 - 4 cm)
5. Stone aggregate substructure
6. Concrete foundation, class C16/20 (top surface concrete 10 cm below paving surface)
7. Ground



### INSTALLATION TO PAVING

#### Description of the assembly

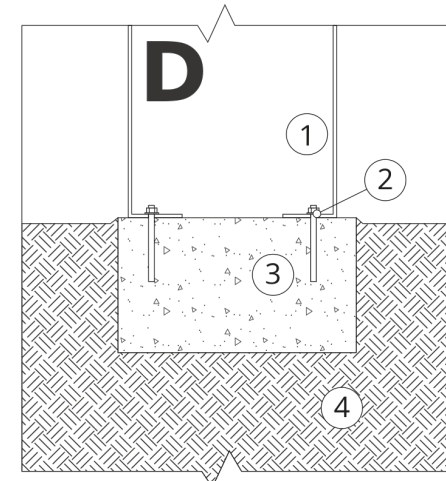
1. ZANO product
2. Quick-action fastener or chemical anchor
3. Stone paving / concrete paving / stone slabs / concrete slabs
4. Sand ballast (approx. 2 - 4 cm)
5. Stone aggregate substructure
6. Ground



### CONCRETE / ASPHALT MOUNTING

#### Description of the assembly

1. ZANO product
2. Quick-action fastener or chemical anchor
3. Fixed hardened surface e.g. concrete or asphalt
4. Concrete foundation, class C16/20 (top surface concrete 10 cm below paving surface)
5. Stone aggregate substructure
6. Sand ballast (approx. 2 - 4 cm)
7. Ground



### MOUNTING TO CONCRETE FOUNDATION

#### Description of the assembly

1. ZANO product
2. Quick-action fastener or chemical anchor
3. Concrete foundation, class C16/20 (top surface concrete 10 cm below paving surface)
4. Ground