



## OPTIONS

### Methods of installation

- embedded in concrete

### Bollard handle

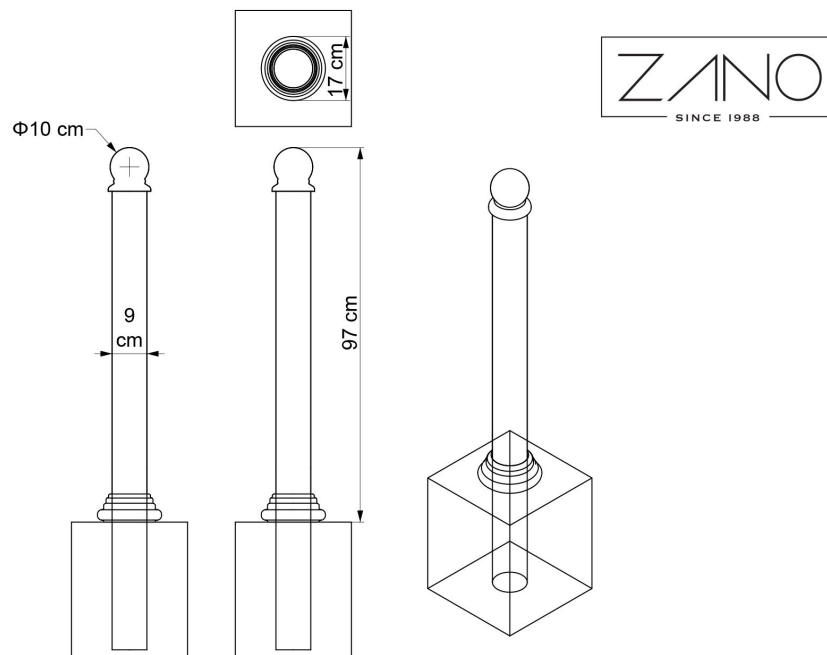
- none
- 1 chain (both sides)
- 1 chain (one side)
- attachment of 2 chains (double-sided)
- attachment of 2 chains (final)

### Fence mounts

- single sided
- double sided
- none

## DESCRIPTION

Bene 01.059 bollard can provide effective pedestrian and vehicle demarcation for a wide range of landscapes. Manufactured from **carbon steel** (available in all **RAL palette standard colours**). Thanks to it this model is extremely robust and has been designed to perform in even the toughest urban environments. Presented **cast iron bollard** can be used to separate pedestrians or streetscape elements from vehicles. It can be concreted to the ground.



## GENERAL TECHNICAL DATA

### Weight

- 25 kg

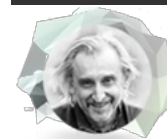
### Dimensions

- height from ground surface: 97 cm  
 - diameter: 9 cm  
 - mounting orifice diameter: 17 cm

### Materials

- cast iron  
 - steel tube: 90 mm

ZANO



Product: Bene Bollard  
 Catalog number: **01.059**  
 Designer: Tomasz Szpytma

In accordance with the Polish Law on Copyright and Related Rights of 04.02.1994 (Official Journal of Laws No. 24, item 83, corrected: Journal of Laws No. 43, item 170) and in accordance with the EU copyright legislation including all EU directives and regulations on copyright, Zano Mirosław Zarotynski Company, reserves the copyright of drawings, descriptions, 3D models, renderings, graphics, content contained in offers, attachments to offers and all other documents. Its content is the intellectual property of ZANO Mirosław Zarotynski company. The use of author's ideas, solutions, copying, distribution of photos, graphics or fragments of graphics, descriptive texts, for profit, without the permission of the author - ZANO Mirosław Zarotynski company - is prohibited and constitutes a copyright infringement and is punishable.

**NOTE:** The drawings do not reflect the actual dimensions of the foundation. They are only exemplary assembly schemes taking into account the type of anchoring and the substrate material to which the furniture is to be fixed.

The size of the foundation depends on the local foundation conditions.



### INSTALLATION INTO PAVING WITH FOUNDATION

#### Description of the assembly

1. ZANO product
2. Stone paving / concrete paving / stone slabs / concrete slabs
3. Sand ballast (approx. 2 - 4 cm)
4. Concrete foundation, class C16/20 (top surface concrete 10 cm below paving surface)
5. Ground



### MOUNTING TO CONCRETE FOUNDATION

#### Description of the assembly

1. ZANO product
2. Concrete foundation, class C16/20 (top surface concrete 10 cm below paving surface)
3. Ground



### MOUNTING TO CONCRETE FOUNDATION

#### Description of the assembly

1. ZANO product
2. Fixed hardened surface e.g. concrete or asphalt
3. Concrete foundation, class C16/20 (top surface concrete 10 cm below paving surface)
4. Stone aggregate substructure
5. Sand ballast (approx. 2 - 4 cm)
6. Ground