

## OPTIONS

---

### Methods of installation

- embedded in concrete

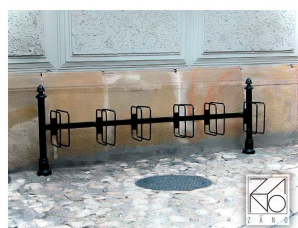
### Rack size

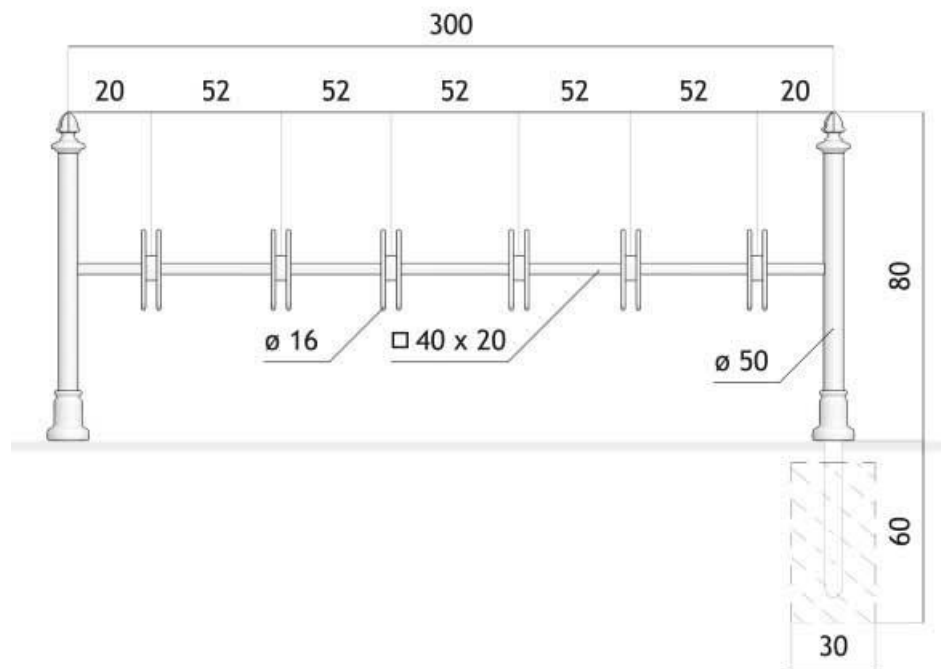
- 3
- 4
- 5
- 6
- 7

## DESCRIPTION

---

Lock 05.051 bicycle rack is an elegantly styled model combining carbon steel construction with cast iron ornaments. It represents a unique range of bicycle parking which combine function and form with a unique retro style. Presented bicycle rack is available in a full range of RAL palette standard colours (for example: dark graphite or black matt). 05.051 bicycle rack was designed to coordinate with other items from the retri ZANO Street Furniture range.





## GENERAL TECHNICAL DATA

### Dimensions

- width: 50 cm
- length: 300 cm
- height from ground surface: 80 cm
- height with anchoring section: 140 cm

### Materials

- iron castings
- steel tubes
- closed profiles

ZANO



Product: Lock Bicycle Rack  
Catalog number: **05.051**  
Designer: Tomasz Szpytma

In accordance with the Polish Law on Copyright and Related Rights of 04.02.1994 (Official Journal of Laws No. 24, item 83, corrected: Journal of Laws No. 43, item 170) and in accordance with the EU copyright legislation including all EU directives and regulations on copyright, Zano Mirosław Zarotynski Company, reserves the copyright of drawings, descriptions, 3D models, renderings, graphics, content contained in offers, attachments to offers and all other documents. Its content is the intellectual property of ZANO Mirosław Zarotynski company. The use of author's ideas, solutions, copying, distribution of photos, graphics or fragments of graphics, descriptive texts, for profit, without the permission of the author - ZANO Mirosław Zarotynski company - is prohibited and constitutes a copyright infringement and is punishable.

**NOTE:** The drawings do not reflect the actual dimensions of the foundation. They are only exemplary assembly schemes taking into account the type of anchoring and the substrate material to which the furniture is to be fixed.

The size of the foundation depends on the local foundation conditions.



### INSTALLATION INTO PAVING WITH FOUNDATION

#### Description of the assembly

1. ZANO product
2. Stone paving / concrete paving / stone slabs / concrete slabs
3. Sand ballast (approx. 2 - 4 cm)
4. Concrete foundation, class C16/20 (top surface concrete 10 cm below paving surface)
5. Ground



### MOUNTING TO CONCRETE FOUNDATION

#### Description of the assembly

1. ZANO product
2. Concrete foundation, class C16/20 (top surface concrete 10 cm below paving surface)
3. Ground



### MOUNTING TO CONCRETE FOUNDATION

#### Description of the assembly

1. ZANO product
2. Fixed hardened surface e.g. concrete or asphalt
3. Concrete foundation, class C16/20 (top surface concrete 10 cm below paving surface)
4. Stone aggregate substructure
5. Sand ballast (approx. 2 - 4 cm)
6. Ground