



GENERAL TECHNICAL DATA

dimensions:

- height: 51 31/32"
- width: 22 53/64"
- depth: 37 13/32"

weight:

- 121.25 lb

materials:

- Carbon steel ASTM A36 galvanized and powder coated according to RAL palette + Stainless steel
- Stainless steel AISI 304SS brushed

DESCRIPTION:

A repair station for bicycles, designed for on-the-spot repairs and adjustments to be made by the user using the structure of the device as a base and tools provided with the repair station. The structure is welded from steel plates with a thickness of $0\frac{13}{64}$ ", made of galvanized and powder-coated carbon steel s235Jr according to the RAL palette, or entirely of ground stainless steel AISI 304SS. The station is equipped with a holder for hanging the bicycle made of two stainless steel pipes with a diameter of $1\frac{21}{32}$ " x $0\frac{7}{64}$ ", with a length of $177\frac{11}{64}$ ". Some of the tools and all fastening elements (cables) included with the station are made of stainless steel. Additionally, the station comes with a bicycle rack and a floor pump.



product:

The bike repair station Kangu with integrated bicycle stand and floor pump 18.004.3.

version:

01

designer:

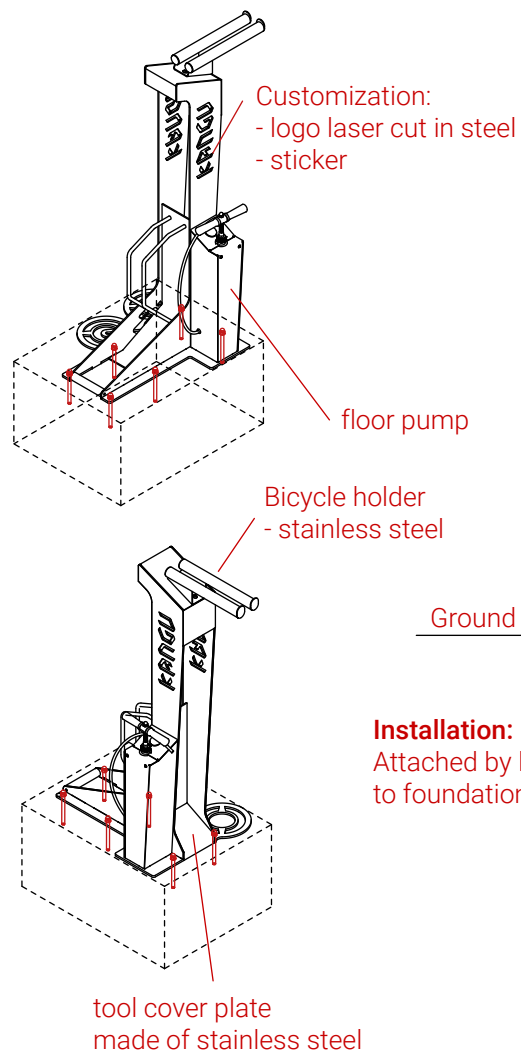
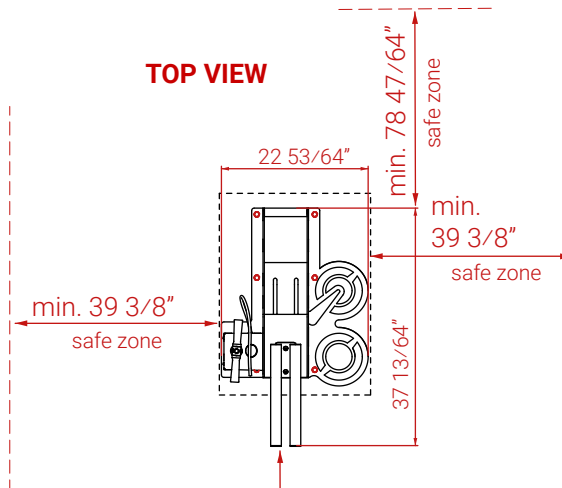
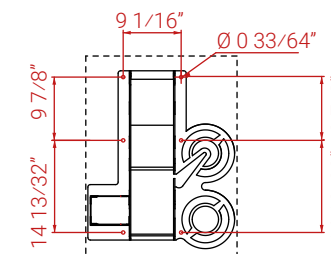
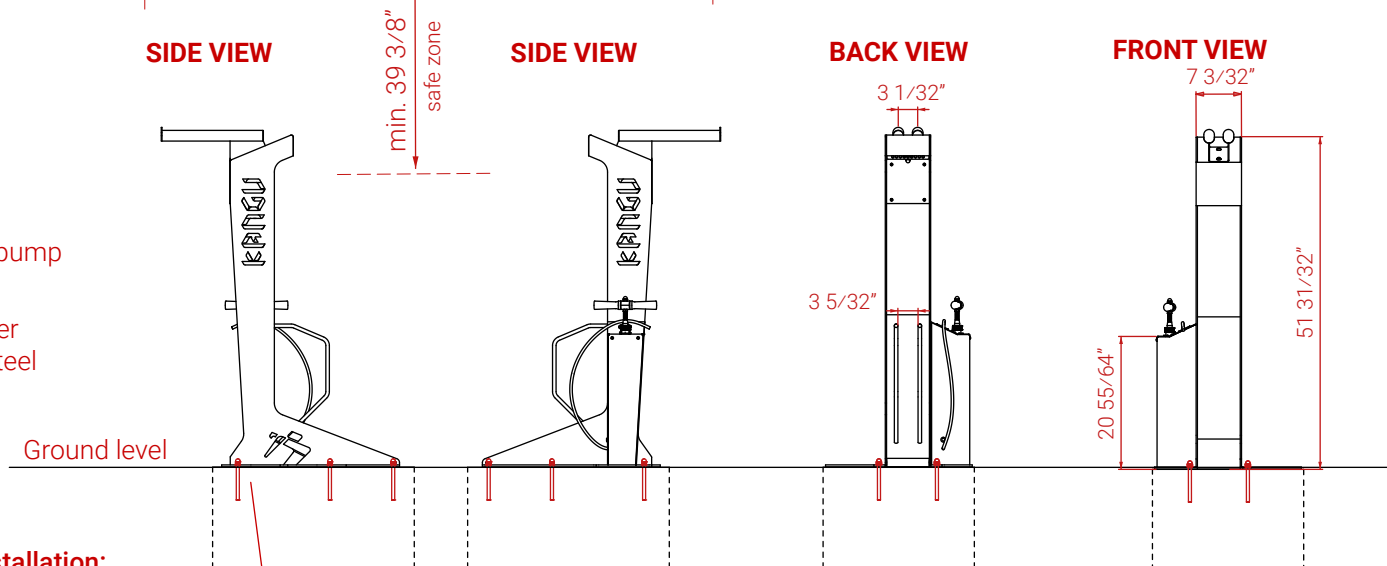
Filip Babiarz, Iwona Żaczek

In accordance with the Polish Law on Copyright and Related Rights of 04.02.1994 (Official Journal of Laws No. 24, item 83, corrected: Journal of Laws No. 43, item 170.) and in accordance with the EU copyright legislation including all EU directives and regulations on copyright, Zano Mirosław Zarotyński Company, reserves the copyright of this drawing, description.

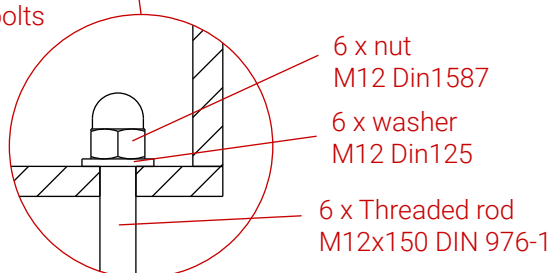
Its content is the intellectual property of ZANO Mirosław Zarotyński company. The use of author's ideas, solutions, copying, distribution of photos, graphics or fragments of graphics, descriptive texts, for profit, without the permission of the author - ZANO Mirosław Zarotyński company - is prohibited and constitutes a copyright infringement and is punishable.

Tools - stainless steel:

- screwdriver
- spanners
- allen keys
- floor pad
- chain stripper
- spoke spanner
- T25 star spanner
- 8mm disc brake wedge

ISOMETRIC VIEW**TOP VIEW****MOUNTING HOLES SPACING****SIDE VIEW****SIDE VIEW****BACK VIEW****FRONT VIEW****Installation:**

Attached by bolts
to foundation




Dimensions given in [mm]

The bike repair station Kangu with
integrated bicycle stand and floor
pump 18.004.3.

In accordance with the Polish Law on Copyright and Related Rights of 04.02.1994 (Official Journal of Laws No. 24, item 83, corrected: Journal of Laws No. 43, item 170), and in accordance with the EU copyright legislation including all EU directives and regulations on copyright, Zano Miroslaw Zarotynski Company, reserves the copyright of this drawing, description. Its content is the intellectual property of ZANO Miroslaw Zarotynski company. The use of author's ideas, solutions, copying, distribution of photos, graphics or fragments of graphics, descriptive texts, for profit, without the permission of the author - ZANO Miroslaw Zarotynski company - is prohibited and constitutes a copyright infringement and is punishable.



ZANO Street Furniture
Lindeggo 7A, 30-148
Cracow, Poland
phone: +48 12 200 20 53
email: office@zano.pl

| | | | |
|---------|-------|-----------|---|
| Number: | | 190522-v2 | |
| Sheet: | | A4 |  |
| Scale: | | 1:30 | |
| Weight: | 55 kg | | |