

GENERAL TECHNICAL DATA

dimensions:

- height: 45 cm
- width: 50 cm
- depth: 48 cm

weight: - with softwood 19 kg
- with hardwood 27 kg

materials: - carbon or stainless steel
- softwood or hardwood

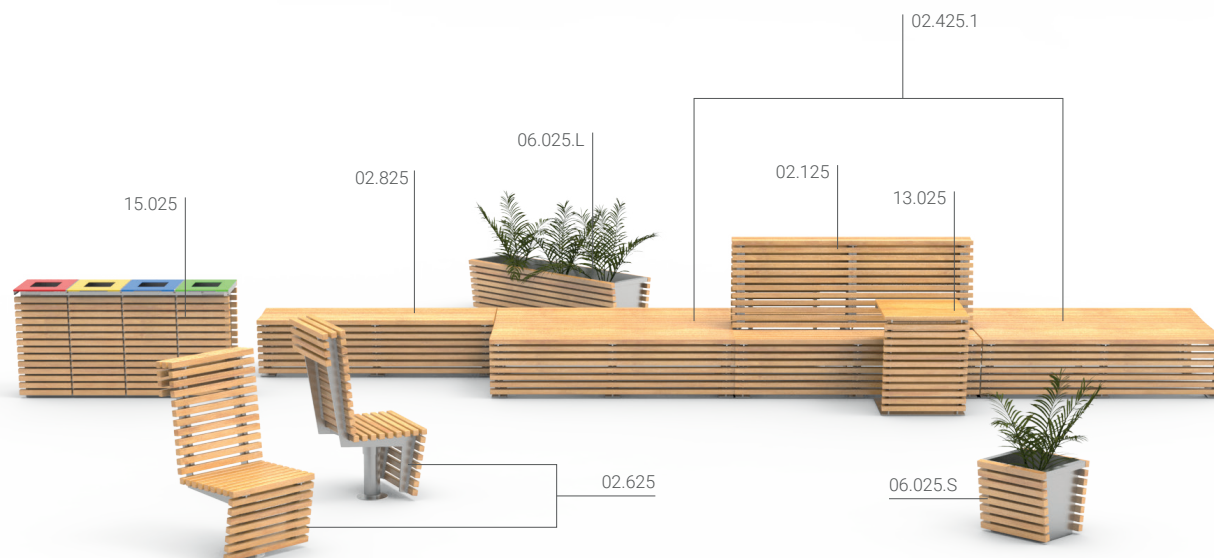
capacity: - 59 L

DESCRIPTION

Welded structure made of steel sheets, joined with planks. The structure is bent, 2 mm thick, from carbon steel s235Jr galvanised and powder-coated to RAL colour, or entirely from stainless steel 1.4301 ground. There is a drainage hole in the bottom of the pot for draining excess water. The flower pot does not have a steel insert.

Wooden planks of rectangular cross-section, 38 x 38 mm. The bench has 16 planks with a length of 500 mm. Softwood impregnated and varnished twice or hardwood impregnated and oiled twice.

All items of street furniture must be properly anchored according to the manufacturer's technical instructions. The manufacturer is not liable for damage caused by negligent use or failure to follow instructions.



ZANO
SINCE 1988

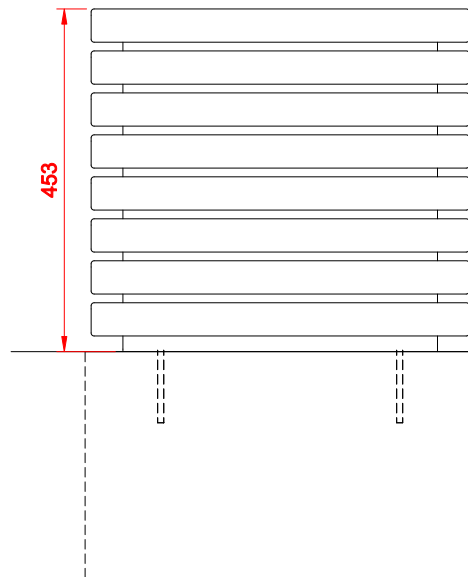


M. Welmiński

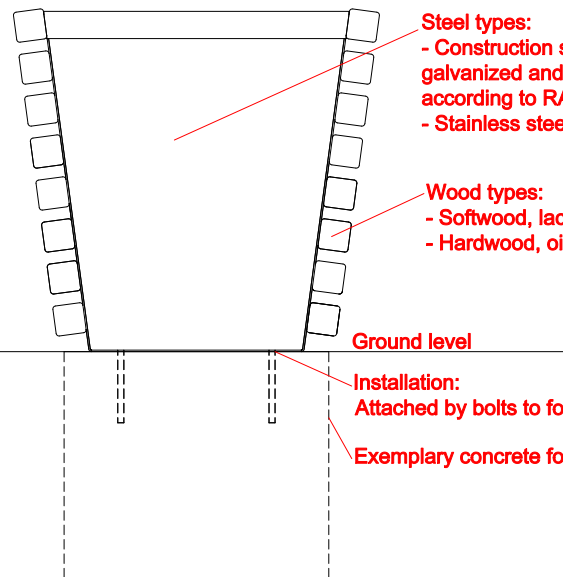
product:
flash planter 06.025.S
version: 1
designer: Mateusz Welmiński

In accordance with the Polish Law on Copyright and Related Rights of 04.02.1994 (Official Journal of Laws No. 24, item 83, corrected: Journal of Laws No. 43, item 170) and in accordance with the EU copyright legislation including all EU directives and regulations on copyright, Zano Mirosław Zarotyński Company, reserves the copyright of drawings, descriptions, 3D models, renderings, graphics, content contained in offers, attachments to offers and all other documents. Its content is the intellectual property of ZANO Mirosław Zarotyński company. The use of author's ideas, solutions, copying, distribution of photos, graphics or fragments of graphics, descriptive texts, for profit, without the permission of the author - ZANO Mirosław Zarotyński company - is prohibited and constitutes a copyright infringement and is punishable.

FRONT VIEW



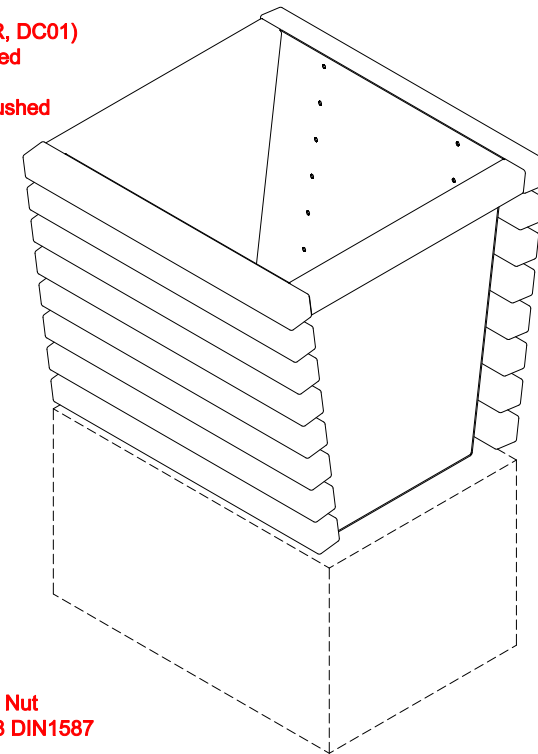
SIDE VIEW



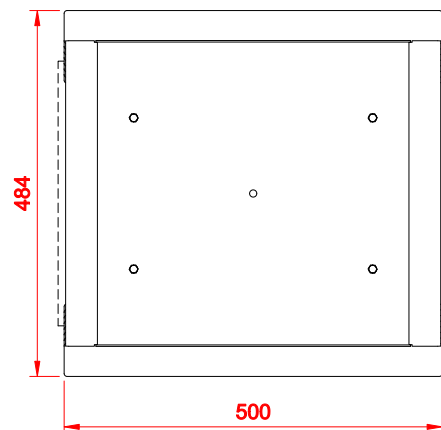
Steel types:
 - Construction steel (S235JR, DC01)
 galvanized and powder coated
 according to RAL palette
 - Stainless steel (1.4301) brushed

Wood types:
 - Softwood, lacquered
 - Hardwood, oiled

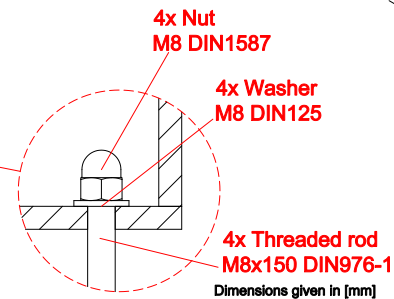
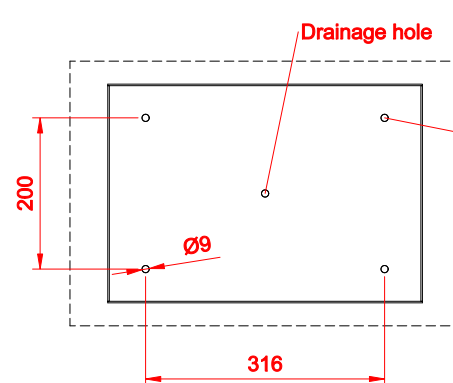
ISOMETRIC VIEW



TOP VIEW



MOUNTING HOLES SPACING



Flash Planter 06.025.S		ZANO Street Furniture Lindegó 7A, 30-148 Cracow, Poland	
In accordance with the Polish Law on Copyright and Related Rights of 04.02.1994 (Official Journal of Laws No. 24, item 83, corrected: Journal of Laws No. 43, item 170) and in accordance with the EU copyright legislation including all EU directives and regulations on copyright, Zano Mirosław Zarotyński Company, reserves the copyright of drawings, descriptions, 3D models, renderings, graphics, content contained in offers, attachments to offers and all other documents. Its content is the intellectual property of ZANO Mirosław Zarotyński company. The use of author's ideas, solutions, copying, distribution of photos, graphics or fragments of graphics, descriptive texts, for profit, without the permission of the author - ZANO Mirosław Zarotyński company - is prohibited and constitutes a copyright infringement and is punishable.		phone: +48 12 200 20 53 email: office@zано.pl	
Number:	091112-v1		
Sheet:	A4		
Scale:	1:10		
Mass:	with soft wood	19 kg	
	with hard wood	27 kg	