

GENERAL TECHNICAL DATA

dimensions:

- height: 37 3/8 inches
- width: 71 7/8 inches
- depth: 22 1/2 inches

- weight:**
- using softwood 160 lb
 - using hardwood 224 lb

- materials:**
- stainless or carbon steel
 - softwood or hardwood

DESCRIPTION

Welded construction combined with wooden planks. Construction weld of steel sheets 0²⁵/₆₄" and 0⁵/₃₂" thick, in carbon ASTM A36 galvanized and powder coated according to RAL palette or wholly in stainless steel AISI 304SS ground.

Seat and backrest of the bench using wooden boards with rectangular section of 3¹¹/₃₂" x 1¹/₂" 10 boards and one corner of 1¹/₂" x 1¹/₂" section and 70⁵⁵/₆₄" long. The bench has 10 boards. Softwood impregnated and varnished twice or hardwood impregnated and oiled twice.

All street furniture must be properly anchored according to the manufacturer's technical instructions. The manufacturer shall not be liable for damage caused by negligent use or failure to follow the instructions.

ZANO
SINCE 1998

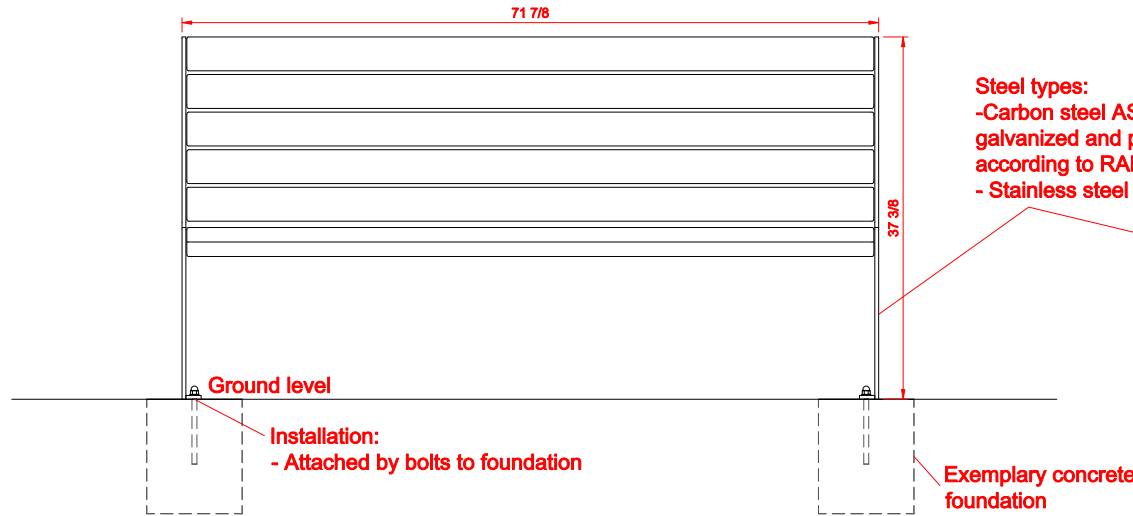


M. Welmiński

product:
bench SIMPLE 02.024
version: 1
designer: Mateusz Welmiński

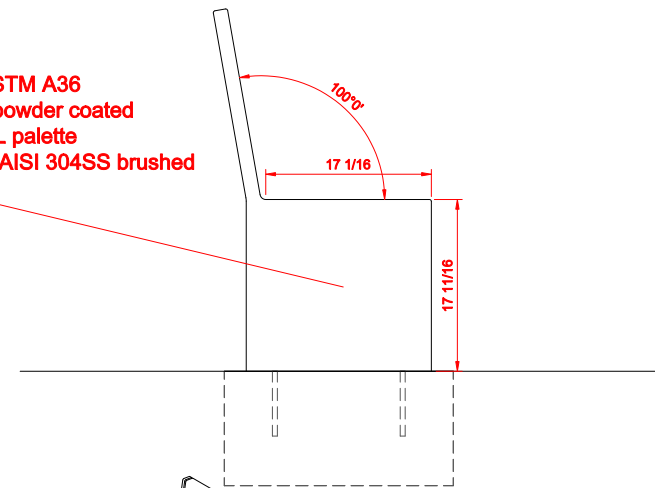
In accordance with the Polish Law on Copyright and Related Rights of 04.02.1994 (Official Journal of Laws No. 24, item 83, corrected: Journal of Laws No. 43, item 170) and in accordance with the EU copyright legislation including all EU directives and regulations on copyright, Zano Miroslaw Zarotyński Company, reserves the copyright of drawings, descriptions, 3D models, renderings, graphics, content contained in offers, attachments to offers and all other documents. Its content is the intellectual property of ZANO Miroslaw Zarotyński company. The use of author's ideas, solutions, copying, distribution of photos, graphics or fragments of graphics, descriptive texts, for profit, without the permission of the author - ZANO Miroslaw Zarotyński company - is prohibited and constitutes a copyright infringement and is punishable.

FRONT VIEW

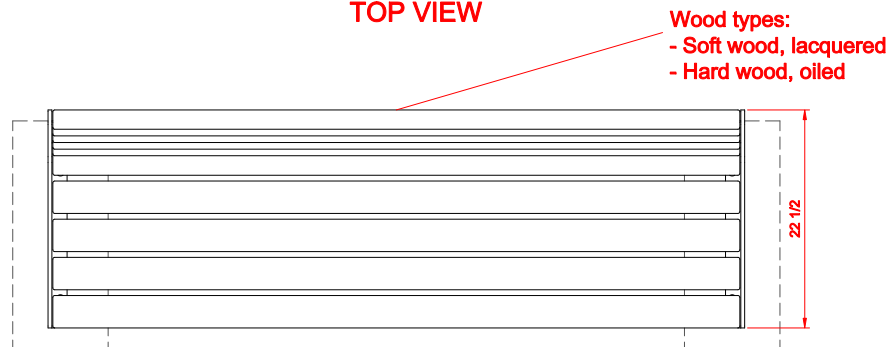


Steel types:
- Carbon steel ASTM A36
galvanized and powder coated
according to RAL palette
- Stainless steel AISI 304SS brushed

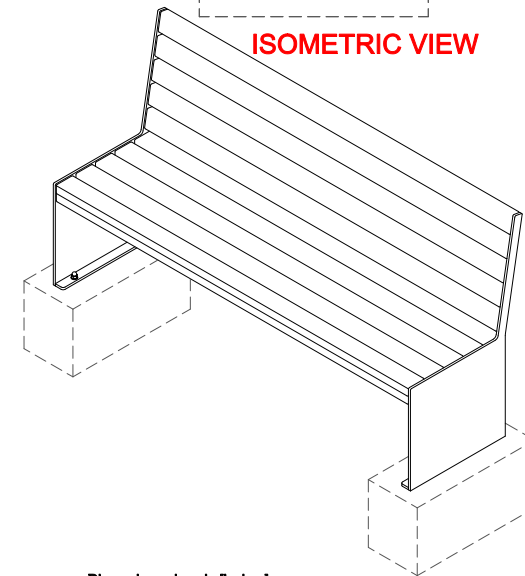
SIDE VIEW



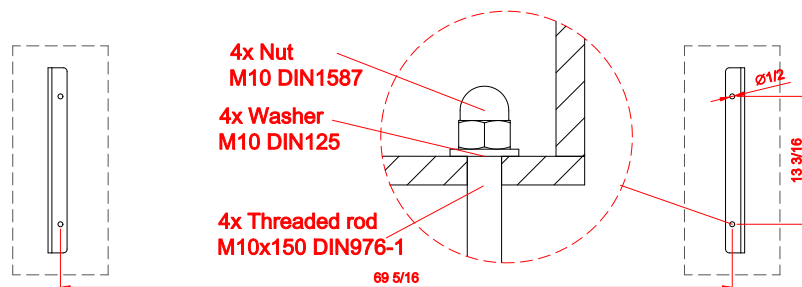
TOP VIEW



ISOMETRIC VIEW



MOUNTING HOLES SPACING



Dimensions given in [inches]

Simple Seating 02.024

In accordance with the Polish Law on Copyright and Related Rights of 04.02.1994 (Official Journal of Laws No. 24, item 83, corrected: Journal of Laws No. 43, item 170) and in accordance with the EU copyright legislation including all EU directives and regulations on copyright, Zano Miroslaw Zarotylski Company, reserves the copyright of drawings, descriptions, 3D models, renderings, graphics, content contained in offers, attachments to offers and all other documents. Its content is the intellectual property of ZANO Miroslaw Zarotylski company. The use of author's ideas, solutions, copying, distribution of photos, graphics or fragments of graphics, descriptive texts, for profit, without the permission of the author - ZANO Miroslaw Zarotylski company - is prohibited and constitutes a copyright infringement and is punishable.



ZANO Street Furniture
Lindegó 7A, 30-148
Cracow, Poland

phone: +48 12 200 20 53
email: office@zano.pl

Number: 210717-v1

Sheet: A4

Scale: 1:20

Mass: with soft wood 160 lb
with hard wood 224 lb